



## Barracuda Web Application Firewall

Powerful, application-layer security for Web servers.

바라쿠다 Web Application Firewall(WAF)은 프로토콜 또는 어플리케이션의 취약점으로 인하여 발생하는 서비스 거부공격, 홈페이지 변조, 정보유출 등의 공격으로부터 웹 및 웹 어플리케이션을 보호합니다.

전통적인 네트워크방화벽 및 침입탐지시스템은 웹 어플리케이션으로 향하는 HTTP, HTTPS, FTP 트래픽에 대하여 검사 없이 통과를 시킵니다.

바라쿠다 Web Application Firewall(WAF)은 웹 어플리케이션으로 향하는 트래픽을 프록시로 처리 및 검사하여 해커에 의하여 웹어플리케이션의 직접적인 접속을 차단하여 웹 서버를 안전하게 보호합니다.

### 포괄적인 웹 사이트 & 웹 어플리케이션 보호

바라쿠다 Web Application Firewall(WAF)은 SQL injection, Cross-site scripting, Session tampering, buffer overflow 등을 포함한 포괄적인 웹 어플리케이션 공격에 대한 최고의 방어기능을 제공합니다.

완벽한 프록시로 동작하면서 바라쿠다 Web Application Firewall(WAF)은 공격을 차단 또는 은폐합니다.

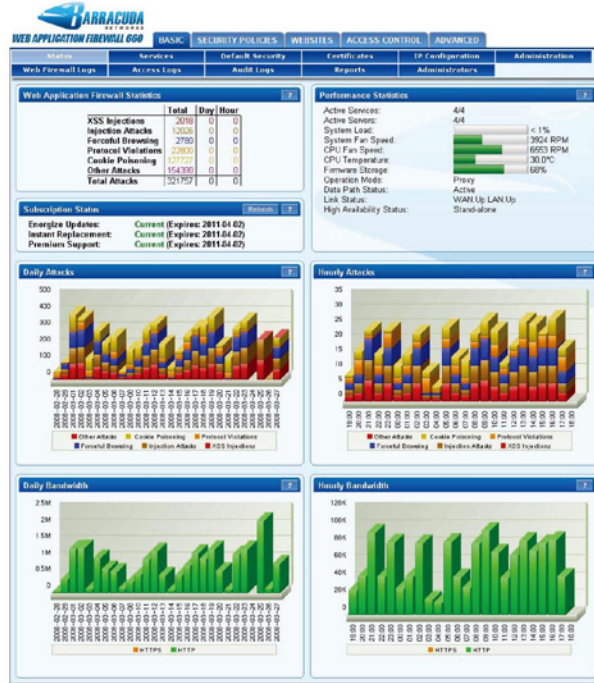
또한 신용카드 정보, 주민등록번호 등의 중요한 정보가 외부로 나가는 것을 방지합니다.

바라쿠다 Web Application Firewall(WAF)은 쿠키변조, 어플리케이션의 접근제어 시스템의 오용을 방지함으로써 Broken access control을 최소화 시킵니다.

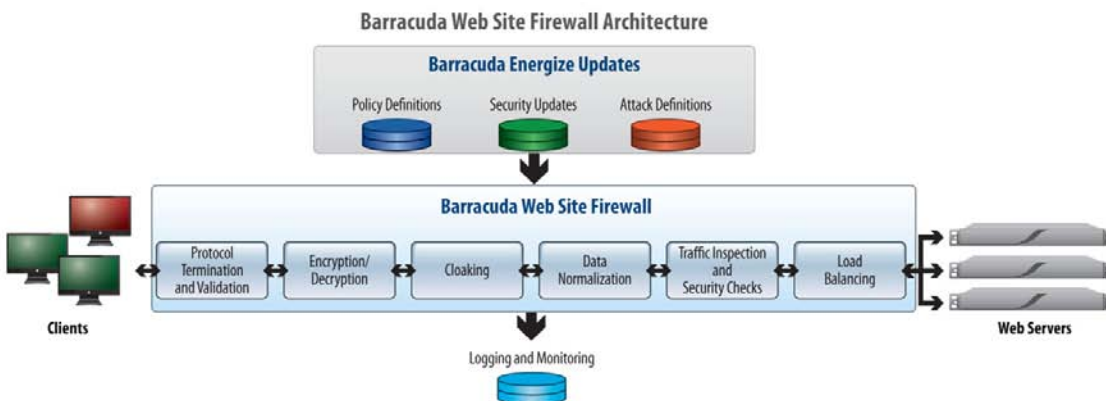
### 웹 서버의 성능 향상을 위한 트래픽 관리와 가속

지속적인 웹 어플리케이션 에 대한 보호와 최소의 보안관리를 위하여, 바라쿠다 Web Application Firewall(WAF)은 실시간의 Energize Update™ 를 통하여 보안업데이트, 공격패턴, 최신보안정책을 유지합니다.

바라쿠다 Web Application Firewall(WAF)은 SSL offloading, SSL 가속, 로드 밸런싱 기술을 포함한 어플리케이션 전송 기능이 통합되어 있습니다.



The Barracuda Web Application Firewall monitors and tracks common application attacks, performance statistics, subscription status and bandwidth usage.



BARRACUDA WEB APPLICATION FIREWALL

MODEL  
360  
460  
660  
860  
960



# BARRACUDA WEB APPLICATION FIREWALL

MODEL  
360  
460  
660  
860  
960



Internet



Network Firewall



## Typical Deployment



Barracuda Web Application Firewall



Web Server

## TECHNICAL SPECIFICATIONS

### Key Features

#### WEB APPLICATION SECURITY

- HTTP/HTTPS/FTP protocol validation
- Protection against common attacks
  - SQL injection
  - OS command injection
  - Cross-site scripting
  - Cookie or forms tampering
- Form field meta data validation
- Web site cloaking
- Response control
  - Block client
  - Reset connection
  - Redirect
- Outbound data theft protection
  - Credit card numbers
  - Social Security numbers
  - Custom pattern matching (regex)
- Granular policies to HTML elements
- AV for file uploads

#### WEB APPLICATION SECURITY (cont.)

- Protocol limit checks
- File upload control
- Brute force protection
- Session tracking

#### AUTHENTICATION AND AUTHORIZATION

- LDAP/RADIUS/local user database
- Client certificates
- Single Sign-On

#### LOGGING, MONITORING AND REPORTING

- System log
- Web Firewall log
- Access log
- Audit log
- PCI reports
- Syslog/FTP support

#### APPLICATION DELIVERY AND ACCELERATION

- High availability
- SSL offloading
- Load balancing
- Hardware SSL acceleration
- Caching
- Compression
- Content routing

#### XML FIREWALL

- XML DOS protection
- Schema / WSDL enforcement
- WS-I conformance checks

#### System Features

- Graphical user interface
- Secure remote administration
- Ethernet hard bypass ("fail open")
- Shared policies
- Trusted host exemption

### Hardware Features

#### CONNECTORS

- Ethernet
  - LAN port (1 Gigabit)
  - WAN port (1 Gigabit)
- Serial port (DB-9) for console

#### POWER REQUIREMENTS

- AC Input Voltage - 110-240 V AC
- Frequency - 50 / 60 Hz

### Support Options

#### ENERGIZE UPDATES SUBSCRIPTION

- Standard technical support
- Policy definitions
- Security updates
- Attack definitions

#### INSTANT REPLACEMENT SERVICE

- Replacement unit shipped next business day
- 24x7 Technical Support

MODEL COMPARISON	MODEL 360	MODEL 460	MODEL 660	MODEL 860	MODEL 960
<b>CAPACITY*</b>					
Backend Servers Supported	1-5	5-10	10-25	25-150	150-300
Throughput (Mbps)	100	200	250	600	1000
<b>HARDWARE</b>					
Rackmount Chassis	1U Mini	1U Mini	1U Fullsize	2U Fullsize	2U Fullsize
Dimensions (in.)	16.8 x 1.7 x 14	16.8 x 1.7 x 14	16.8 x 1.7 x 22.6	17.4 x 3.5 x 25.5	17.4 x 3.5 x 25.5
Dimensions (cm.)	42.7 x 4.3 x 35.6	42.7 x 4.3 x 35.6	42.7 x 4.3 x 57.4	44.2 x 8.9 x 64.8	44.2 x 8.9 x 64.8
Weight (lbs. / kg.)	12 / 5.4	12 / 5.4	26 / 11.8	46 / 20.9	52 / 23.6
Front Ethernet Ports	2 x 10/100	2 x Gigabit	2 x Gigabit	2 x Gigabit	2 x Gigabit
Back Ethernet Ports	1 x 10/100	1 x 10/100	1 x Gigabit	1 x Gigabit	1 x Gigabit
AC Input Current (Amps)	1.2	1.4	1.8	4.1	5.4
ECC Memory			✓	✓	✓
<b>FEATURES</b>					
HTTP/HTTPS/FTP Protocol Validation	✓	✓	✓	✓	✓
Protection Against Common Attacks	✓	✓	✓	✓	✓
Form Field Meta Data Validation	✓	✓	✓	✓	✓
Web Site Cloaking	✓	✓	✓	✓	✓
Response Control	✓	✓	✓	✓	✓
Outbound Data Theft Protection	✓	✓	✓	✓	✓
Granular Policies to HTML Elements	✓	✓	✓	✓	✓
Protocol Limit Checks	✓	✓	✓	✓	✓
File Upload Control	✓	✓	✓	✓	✓
Logging, Monitoring and Reporting	✓	✓	✓	✓	✓
High Availability	✓	✓	✓	✓	✓
SSL Offloading	✓	✓	✓	✓	✓
Authentication and Authorization	✓	✓	✓	✓	✓
LDAP/RADIUS Integration		✓	✓	✓	✓
Load Balancing		✓	✓	✓	✓
Content Routing		✓	✓	✓	✓
XML Firewall			✓	✓	✓

US 10.0

Specifications subject to change without notice.

(주) 사스쿼치글로벌네트웍스(<http://www.sasquatch.co.kr>)

바라쿠다네트웍스 한국공식수입원

연락처 : [sales@sasquatch.co.kr](mailto:sales@sasquatch.co.kr)

Copyright © 2009 Barracuda Networks Inc.

